

*KANSAS STATE BOARD
OF HEALING ARTS:
WHO WE ARE,
WHAT WE DO, AND
HOW WE DO IT*


Courtney Cyzman, BSW, JD – General Counsel

The Office of the General Counsel does not render legal advice or services to private individuals or entities. All statements are intended as general guidance and do not necessarily represent the position of the Board. No warranties or representations are made regarding the completeness or adequacy of the information provided. You should not construe this general guidance as legal advice or the establishment of an attorney-client relationship. It is necessary that you obtain independent legal counsel for an application of the law to your particular situation.

Disclaimer



Roadmap

- Overview of KSBHA
 - Licensing
 - General Counsel
 - Disciplinary & Litigation
 - COVID-19
 - FAQs
 - Resources
- 



The background of the slide features a wooden gavel and a wooden mallet resting on a wooden surface. The gavel is positioned vertically, and the mallet is positioned horizontally. The text is overlaid on this background.

Mission

To protect the public by authorizing only those persons who meet and maintain certain qualifications to be licensed in the healthcare professions regulated by the Board.

To protect the public from incompetence or unprofessional conduct by persons who have been licensed to practice in Kansas and from unauthorized practice by persons and entities who have not been licensed to practice in Kansas.

Board Members

Appointed by the Governor

4 year terms; 3 term limit

15 total members

- 5 MDs
- 3 DOs
- 3 DCs
- 1 DPM
- 3 public members



SECOND FRIDAY OF
EVERY OTHER MONTH
(FEB., APRIL, JUNE, AUG.,
OCT., DEC.)



OPEN TO THE PUBLIC,
STREAMED LIVE ON
YOUTUBE,
TELECONFERENCE



NEXT MEETING IS
OCT. 8, 2021



THOMAS ESTEP, M.D.
(PRESIDENT); RONALD
VARNER, D.O. (VICE
PRESIDENT)

Board Meetings

31,438



AT

DC

MD/DO

DPM

LRT

ND

OT/OTA

PA

PT/PTA

RT

LAc

CNM-I

CLD

CPM

Who we license



Councils



- PA, PT, OT, RT, LAc, AT, LRT, CNM-I, ND
 - Help carry out the provisions of the practice act
 - Positions vary in appointment (Governor, Board)
 - Meetings typically held quarterly or as needed
 - Open to the public
-

KSBHA OT Council

Advises the Board in carrying out the provisions of the OT Practice Act

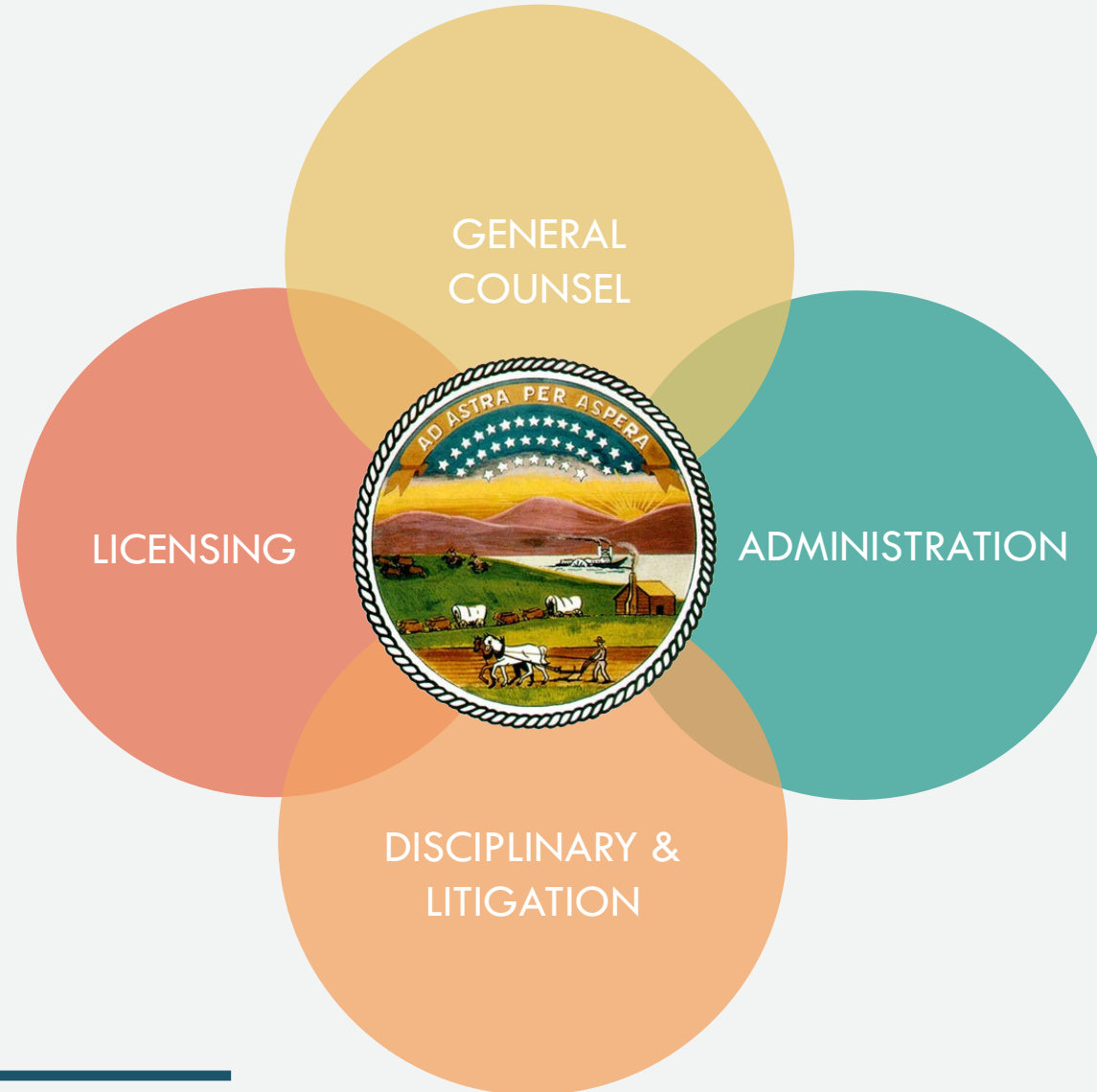
5 council members

- 3 OTs
- 1 Board Appointed Physician
- 1 Board President or Designee

Meetings held quarterly

- Next meeting is October 25, 2021

KSBHA Department Overview



A close-up photograph of a person's hands holding a white rectangular sign. The sign features the word "Licensing" written in a large, black, serif typeface. The person's hands are visible on the left and right sides of the sign, and they are wearing a teal-colored garment. The background is a plain, light blue-grey color.

Licensing

Licensing Department Overview



Applications

Initial, Renewal,
Reinstatement &
Conversions



Maintenance

Upkeep of licensee
information in the
agency database.
Supervision
notices, practice
protocols, and
termination of
supervision



Point of Contact

Main point of
contact
throughout the
application process
and during the
period of licensure



License Verification

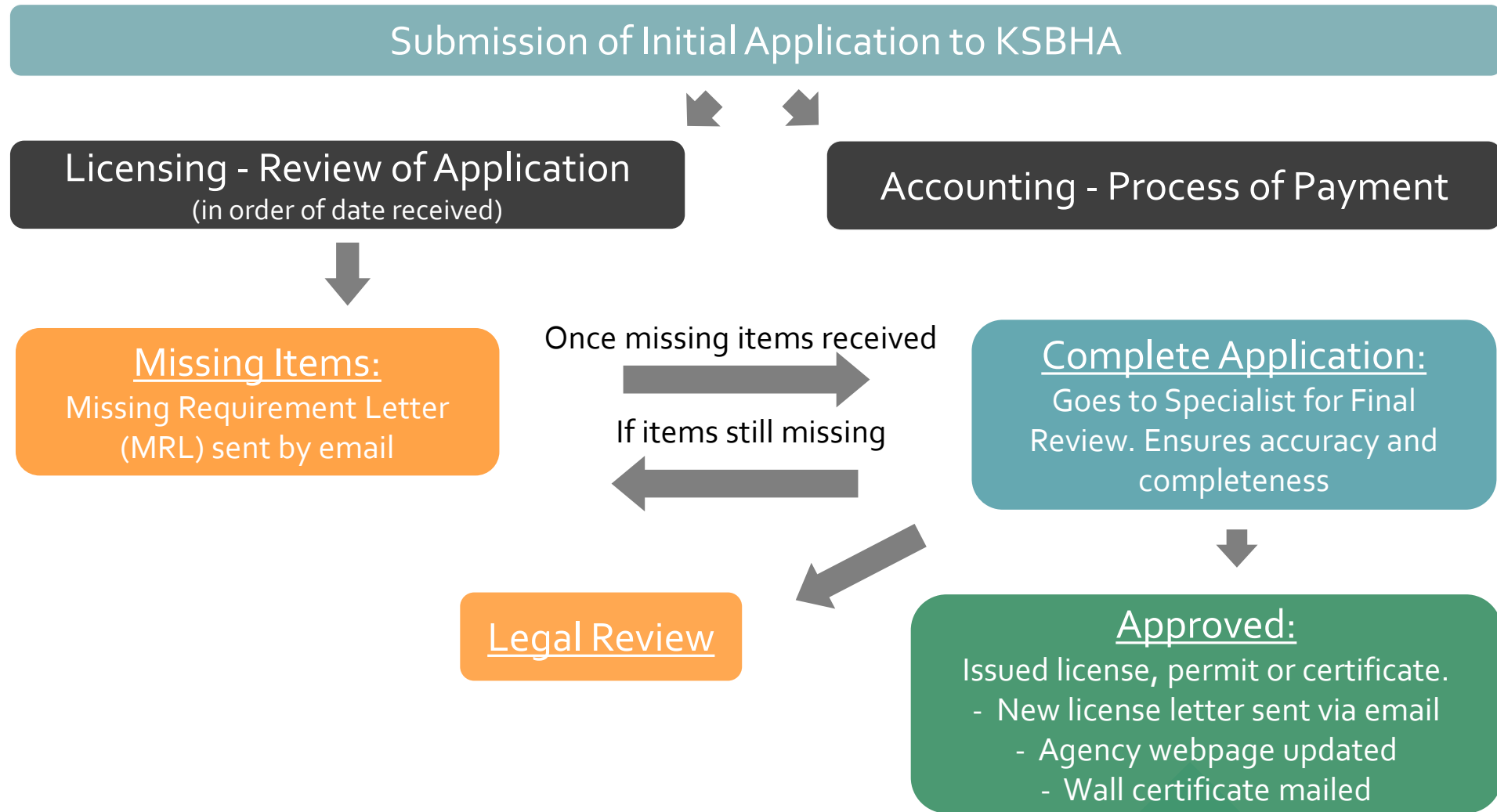
Verification of
licensure to state
boards, employers,
and other third
parties



Presentations

Outreach and
education
presentations

Application Process



Application Guidance & Tips

Information & Documents

- Request 3rd party documents prior to or upon submission of the application
- Ensure documents are primary source received, when applicable
- Provide personal statement and supporting documents for any “yes” answers to attestation questions
- Submit documentation of name change, if more than one name is used

Application Submission

- Review all portions of the application for completeness and accuracy
- Make copies of all items submitted
- Consider submitting items via email when applicable
- Consider tracking or signature confirmation service for mailed items
- Applications will not be fully processed if fees are not included

Processing Time

- Allow at least 2 weeks to receive notification that the application has been processed
- Time of issuance will vary
- Longest delay is waiting for 3rd party documents
- If application is sent for legal review expect a delay
- Stay in contact with the analyst processing your application
- Keep contact information up to date

- 10% increase in new applications received
- Decreased application processing times to 7 business days or less
- Creation of Emergency Temporary License application, Telemedicine Waiver form, and other COVID-19 response forms
- Restructured temporary license and student permit final review process for expedited issuance
- Online portal button added to website
- Wallet cards are now available through online portal
- Nearly all renewal applications have been revised
- Revisions to OT/OTA Supervision Forms
- Implementing HB 2066

Licensing Updates

Changes ahead...



Revising all initial, renewal, reinstatement applications



Creating online initial applications



Implementation of PT Compact

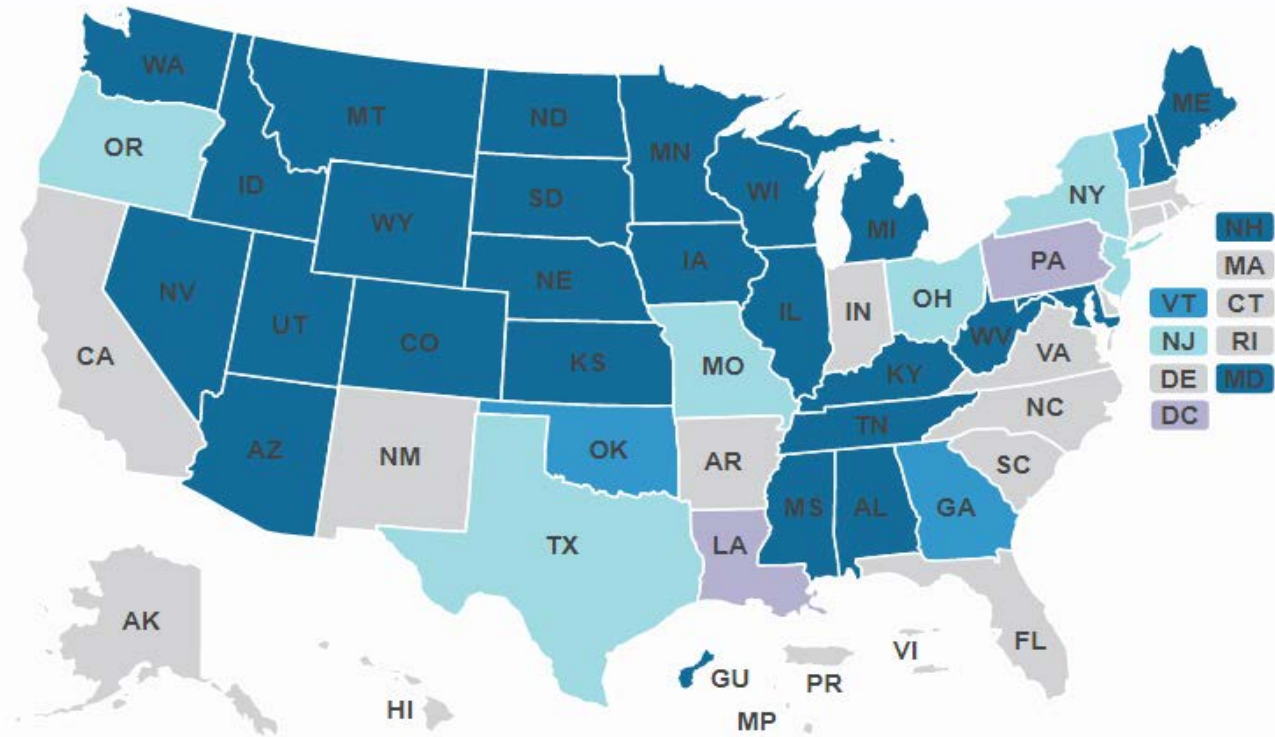


New website

A map of the United States is shown in shades of blue. A large, dark stethoscope is overlaid on the map, with its chest piece positioned over the central United States and its earpieces extending towards the top and bottom right corners. The text "INTERSTATE MEDICAL LICENSURE COMPACT" is written in a large, white, serif font across the center of the map, partially overlapping the stethoscope.

INTERSTATE MEDICAL LICENSURE COMPACT

U.S. State Participation in the Compact



- = Compact Legislation Introduced
- = IMLC Member State serving as SPL processing applications and issuing licenses*
- = IMLC Member State non-SPL issuing licenses*
- = IMLC Passed; Implementation In Progress or Delayed*

* Questions regarding the current status and extent of these states' and boards' participation in the IMLC should be directed to the [respective state boards](#).



Physical Therapy Compact

- Passed and signed by Governor Kelly during the 2021 legislative session – now law
- Compact privilege for PT/PTAs
- Waiting on FBI approval for background checks to complete implementation

GENERAL COUNSEL



*SERVE AS ATTORNEYS
FOR THE AGENCY AND
BOARD MEMBERS IN
THEIR OFFICIAL
CAPACITIES*

Legal advice to departments

Legal advice to Board members

Legislation and regulations

Appeals

Defense Counsel

Prosecute unlicensed practice cases

Council Meetings

Professional corporate certificates

Contracts

HR

Presentations

Projects



What's in the works?

- Many regulations promulgation process (new and amendments)
 - Increasing our outreach efforts through the Education & Outreach Committee
 - Continued discussion with stakeholders on a state-wide strategic plan for healthcare provider wellness
 - KSBHA Policy Committee
 - Office Based Surgery
- 

A magnifying glass with a black handle is positioned over two strips of white, torn paper. The paper strips are layered, with the top strip displaying the word "REGULATIONS" and the bottom strip displaying the word "COMPLIANCE". Both words are printed in a bold, black, serif font. The magnifying glass's lens is centered over the text, and its reflection is visible on the surface below. The background is a soft, light blue gradient. On the right side of the image, there is a large, light blue circular shape that partially overlaps the white background, and a smaller, dark teal circular shape is located at the bottom right corner.

REGULATIONS
COMPLIANCE

Disciplinary Department



COMPLAINTS



INVESTIGATIONS

Prosecution

- Applications & Licenses

Monitoring

Litigation Department



GENERAL OVERVIEW

Board Actions



Letter of Concern



Professional
Development Plan



Public Censure



Fine



Probation



Limitation



Suspension



Revocation

COVID-19 Response



- **Generally, all healthcare professionals treating patients located in Kansas (whether by telehealth or in person) are required to have a Kansas license.**
- **Kansas has never prohibited telehealth as a treatment modality.**
- The emergency COVID-19 statute has allowed additional options for out of state providers who wish to treat Kansas patients:
 - Emergency temporary license



Emergency Temporary License

- Emergency temporary license for COVID-19 response and mitigation is available for all healthcare professions regulated by the Board.
- Free
- Allows healthcare practitioner to physically practice in Kansas or conduct telemedicine to patients located in Kansas.
- March 31, 2022

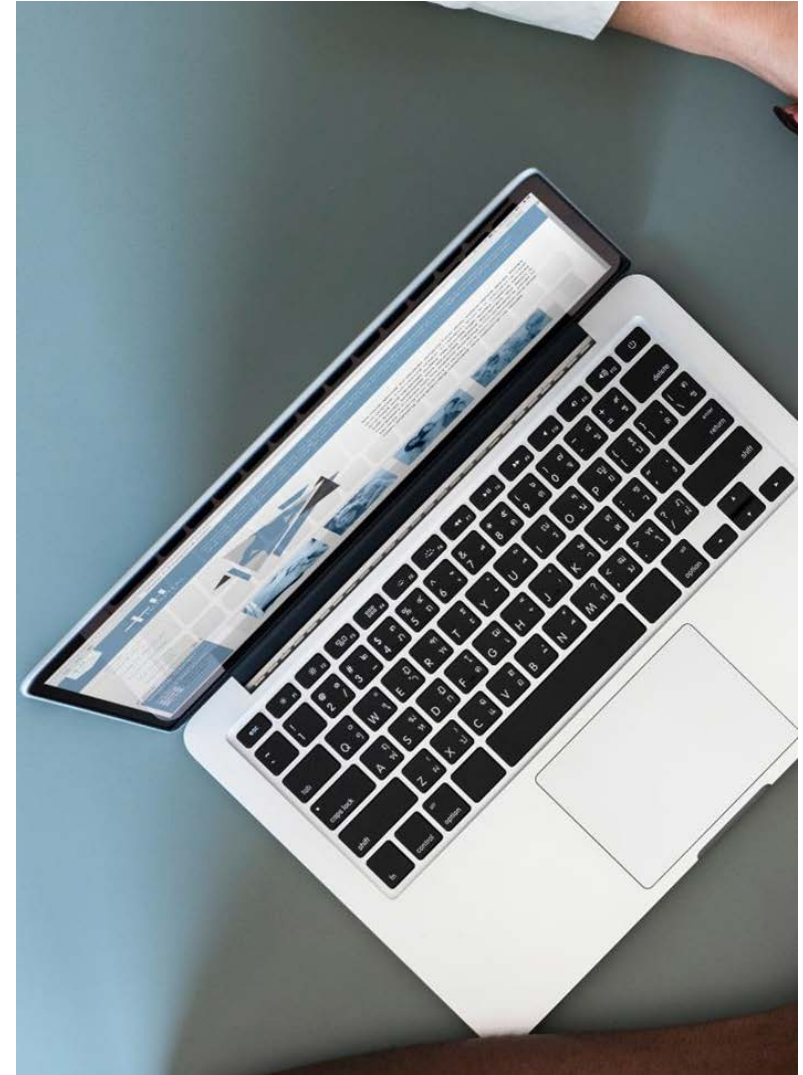
Emergency Temporary License Eligibility

- Hold a valid, full, active, and unencumbered license in another state and are not subject to investigation or discipline in another state
- Have held an active or exempt license in KS within the past 2 years
- Currently hold a valid Federal Active license
- Meet all requirements for licensure in KS but are unable to pay fee due to effects of pandemic
- As of September 8, 2021– 281 issued



Telemedicine Waiver

- Available for all healthcare professions regulated by the Board.
 - Currently hold a full, active, and unrestricted license in another state or meets qualifications for licensure under KS law to practice profession; and not subject of any investigation or disciplinary action by any licensing agency
- Allows healthcare practitioner to conduct telemedicine to patients located in Kansas
- \$100 - \$97 application fee; \$3 NPDB fee
- Permanent



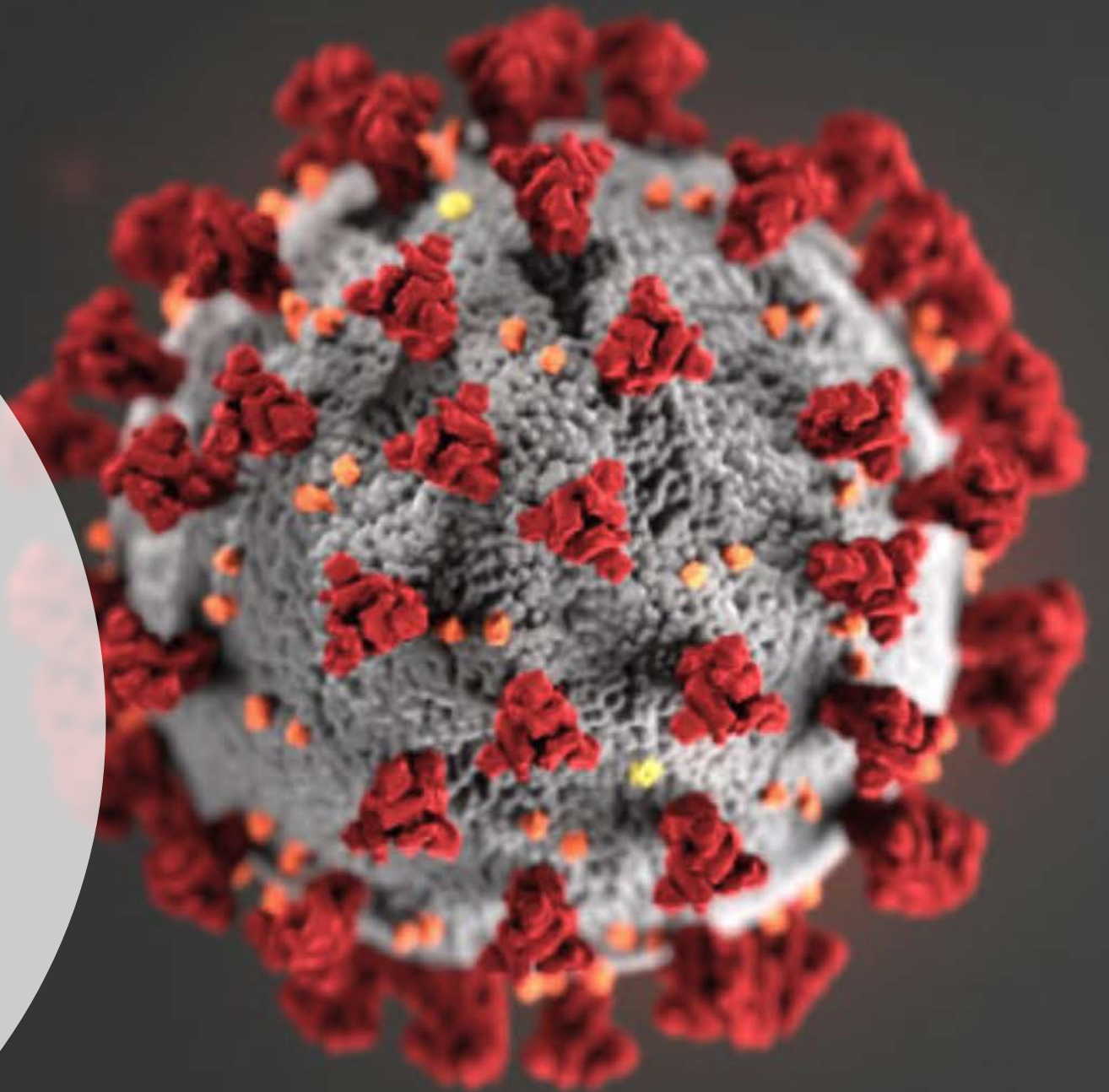


Continuing Education

All in-person continuing education requirements can be satisfied by live, online continuing education until December 31, 2021.

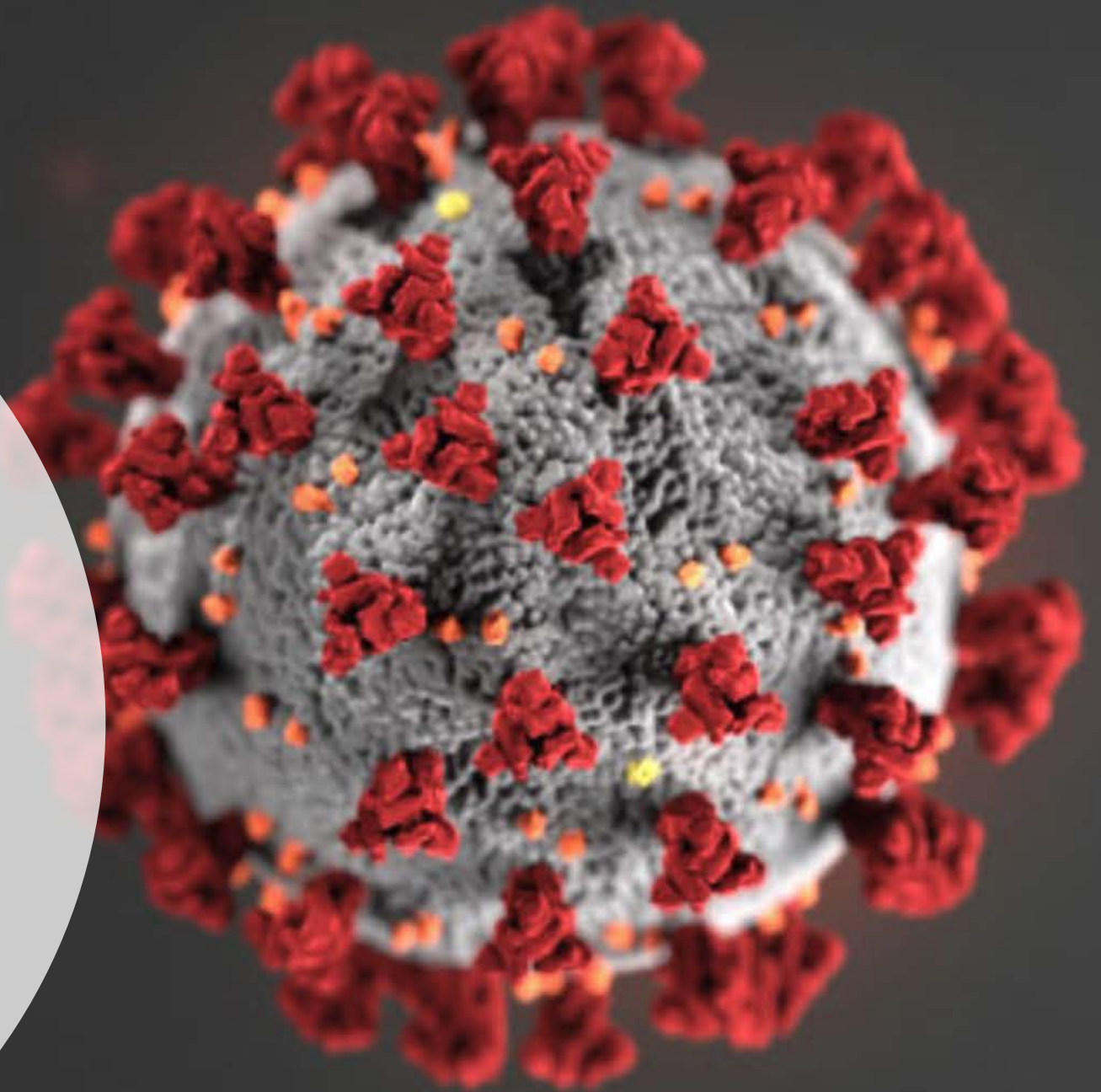
Board Guidance Statements

Technical violations of the Healing Arts Act or other applicable practice act by healthcare providers that do not endanger or defraud the public, which are committed in the course of good faith COVID-19 response efforts during the Kansas emergency declaration period, will generally not be treated as a disciplinary matter by the Board.



Board Guidance Statements

If the Board finds that any licensee has taken advantage of the COVID-19 crisis for personal gain in a fraudulent, misleading, or unethical manner that constitutes unprofessional conduct under the Healing Arts Act, the Board will consider such conduct to be an aggravated violation of the Healing Arts Act or other applicable practice act and will exercise its full authority to impose discipline for such conduct, including suspension or revocation.






COVID-19

KSBHA Updates & Guidance

www.ksbha.org


**How do I update my
contact information?**

- 
- Complete the Address Change Form and email it to KSBHA_Licensing@ks.gov. You may also mail it to our office.
 - <http://www.ksbha.org/formpages/licensureforms.shtml#otforms>

**How do I change my
name with the Board?**

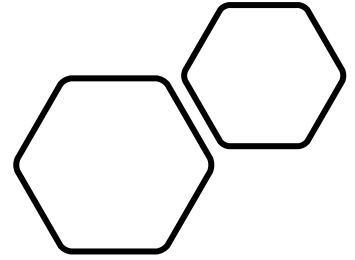
- 
- Complete the Change of Name Form and email it to KSBHA_Licensing@ks.gov. You may also mail it to our office.
 - <http://www.ksbha.org/formpages/licensureforms.shtml#otforms>

**How do I get a new
wallet card?**

- 
- Login to the online portal to access a current copy of your wallet card.
 - https://ksbha.ks.gov/egov_boha



RESOURCES





KSBHA Resources

- Practice Handbooks
- Policies
- KSBHA_Licensing@ks.gov
- KSBHA_Complaints@ks.gov
- KSBHA_LegalQuestions@ks.gov
- Education & Outreach
 - Website page at <http://www.ksbha.org/education.shtml>

Contact Information

Courtney E. Cyzman, BSW, J.D.

General Counsel

Kansas State Board of Healing Arts

800 SW Jackson Lower Level – Suite A

Topeka, KS 66612

courtney.cyzman@ks.gov

